



New Southwest Elementary



Community Meeting

April 27, 2017
Rogers High School



NAC
ARCHITECTURE

team members

Puyallup School District Team

- Les Gerstmann: PSD Project Manager
- Gary Frentress: Executive Director of Capital Projects
- Brian Devereux: Director of Facilities Planning
- Mario Casello: Chief Operations Officer
- Judy Piger: Director of Educational Planning

DAT Team Members

NAC Architecture

- Kevin Flanagan: Principal Architect
- Philip Riedel: Architect

informational meetings

Goals

- Gain information/knowledge about the New Southwest Elementary school project
- Opportunity to meet project team members
- Hear about the process of the project
- Opportunity to ask questions, share information from the community perspective
- Observe some of the schematic design drawings

Design Advisory Team

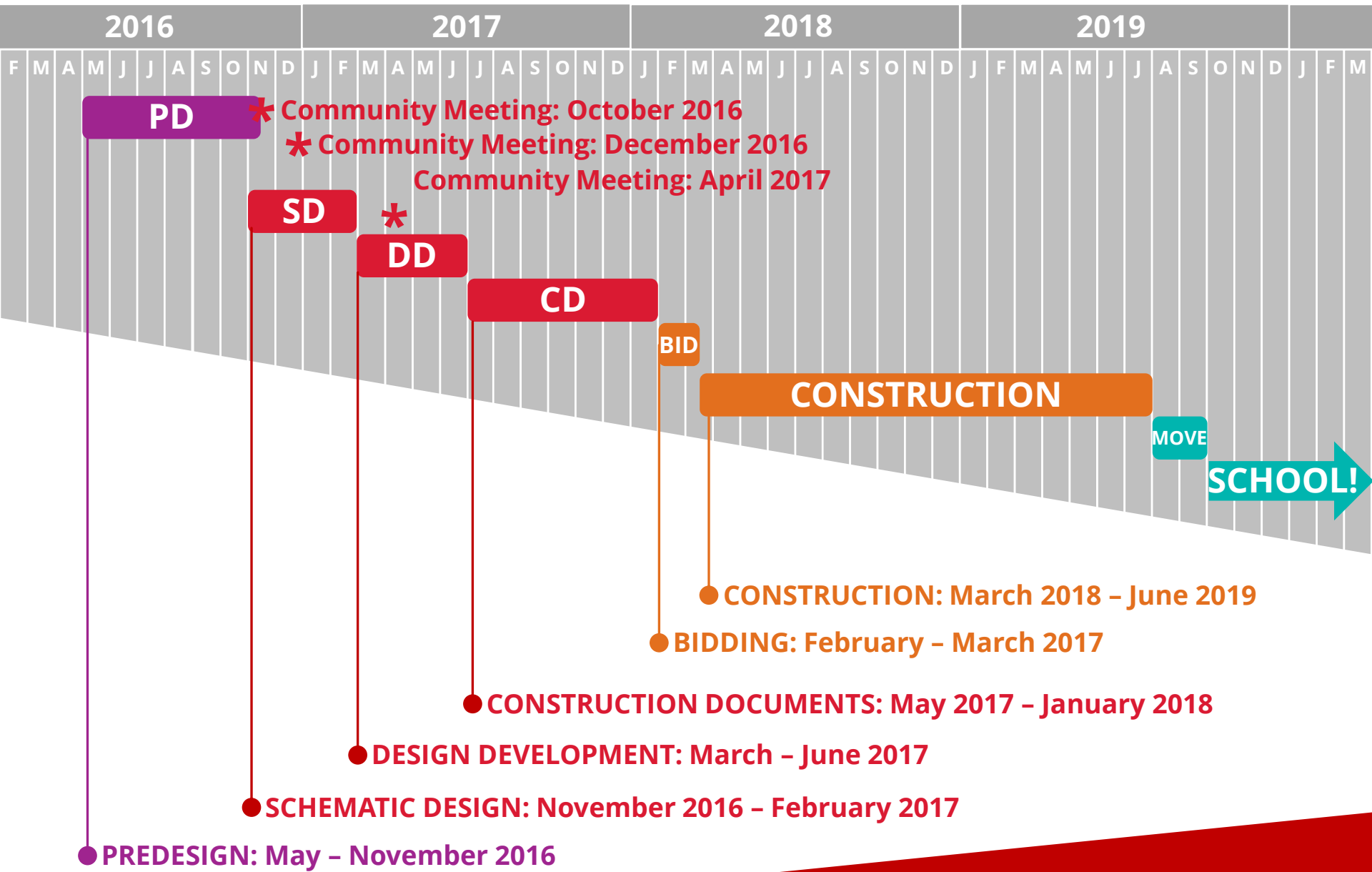
Purpose of the DAT:

- Serves as project representative and reports back to constituents
- Consistent presence during the design and planning process
- Speaks to and holds District and school goals for the project
- Synthesizes community-wide input
- Teachers, staff and administrators from the school district administrators, Design Team

Design Advisory Team

Issues we heard at last meeting

- Traffic
- Stormwater
- Neighborhood landscape buffers
- Native habitat
- Safe routes to school



overall schedule

project goals

- To create a welcoming, serene, and protected environment connected to nature
- Neighborhood school
- Well thought out traffic management with long drives and good flow
- Support learning in different types of spaces
- Safe / secure environment that is welcoming, beautiful, inspiring, creative
- Allow for independence, provide students ownership of learning

experiential qualities

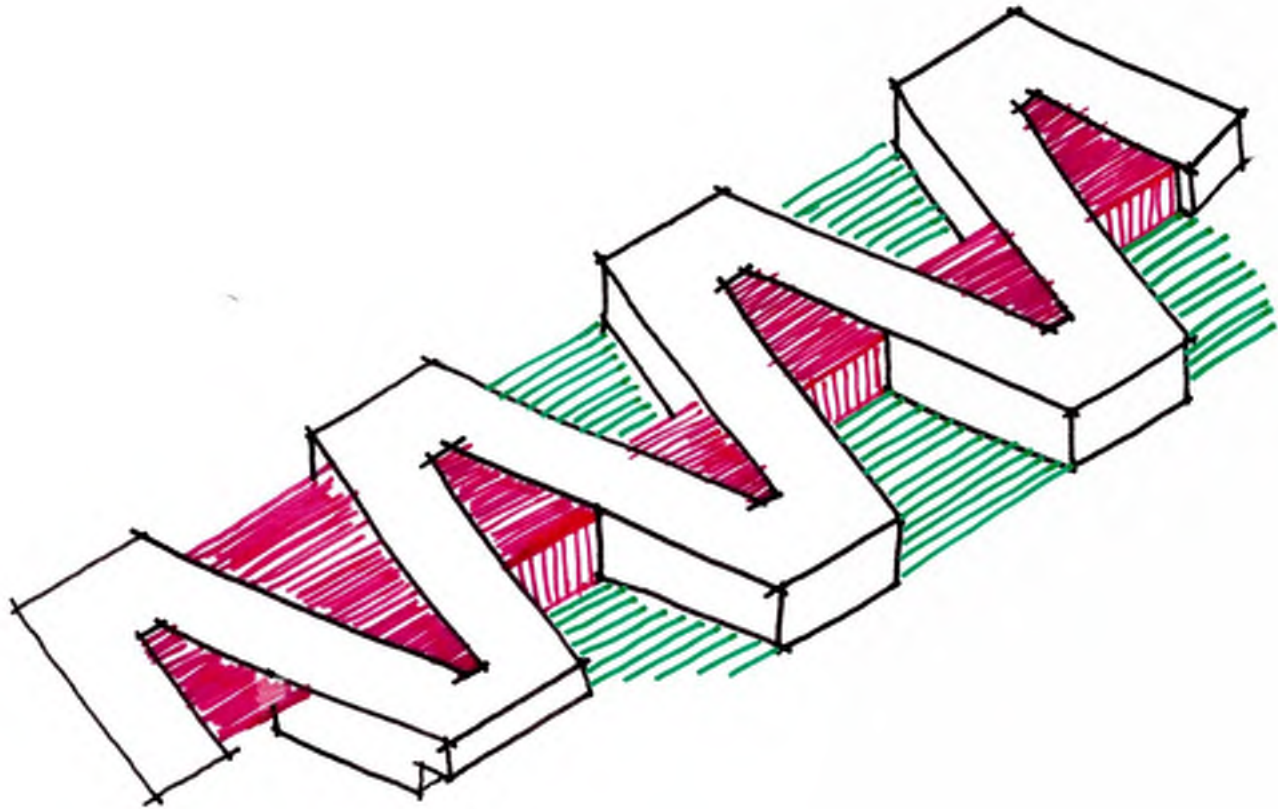
Peaceful
Comforting
Light
Beautiful
Inspiring
Independence
Sense of ownership
Welcoming
Sense of community

Ease of movement
Safe
Friendly
Connection to nature
Relaxed setting
Integrated technology
Everyone is engaged
Develop a sense of
place

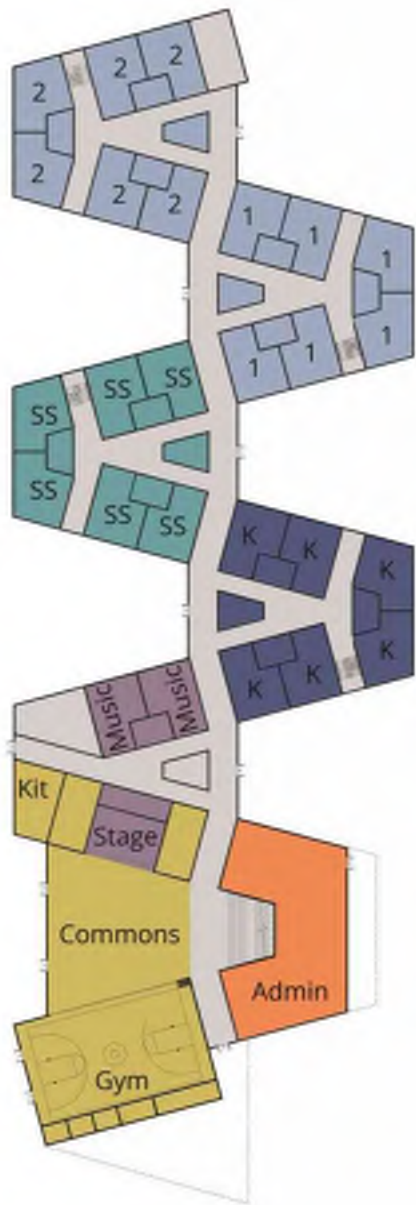
Weaving through nature



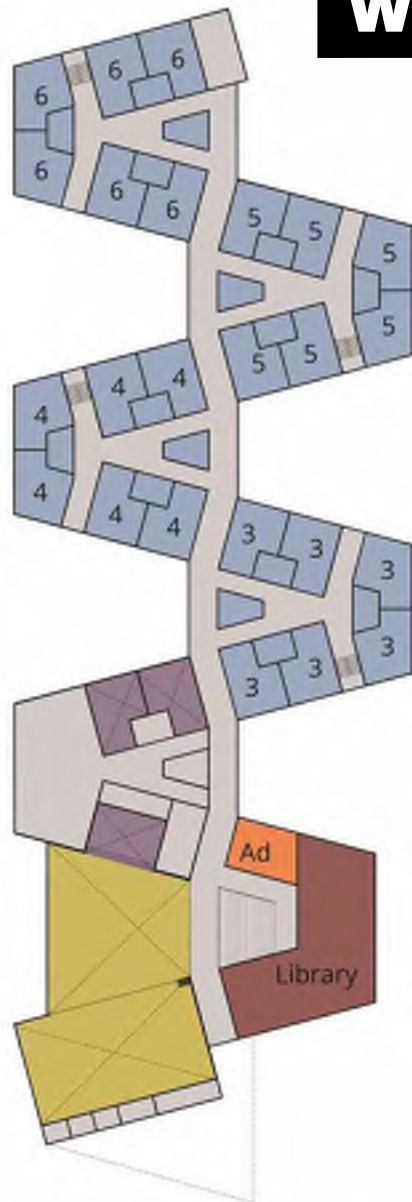
Weaving through nature



Weaving through nature

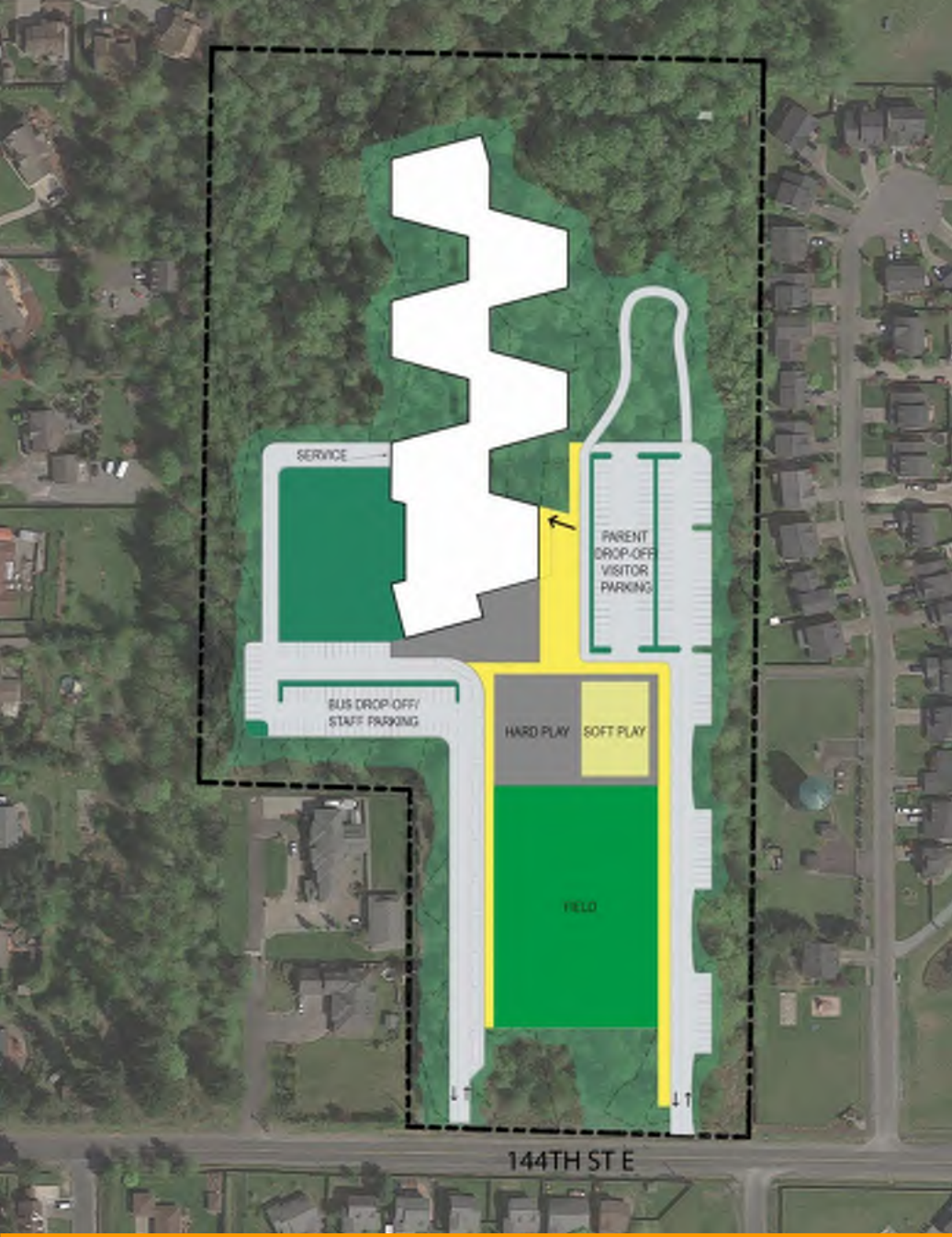


MAIN LEVEL



UPPER LEVEL

Weaving through nature



Original Concept Drawing: Site Layout

Weaving through nature



Original Concept Drawing: Entry



Site Design



Frontage

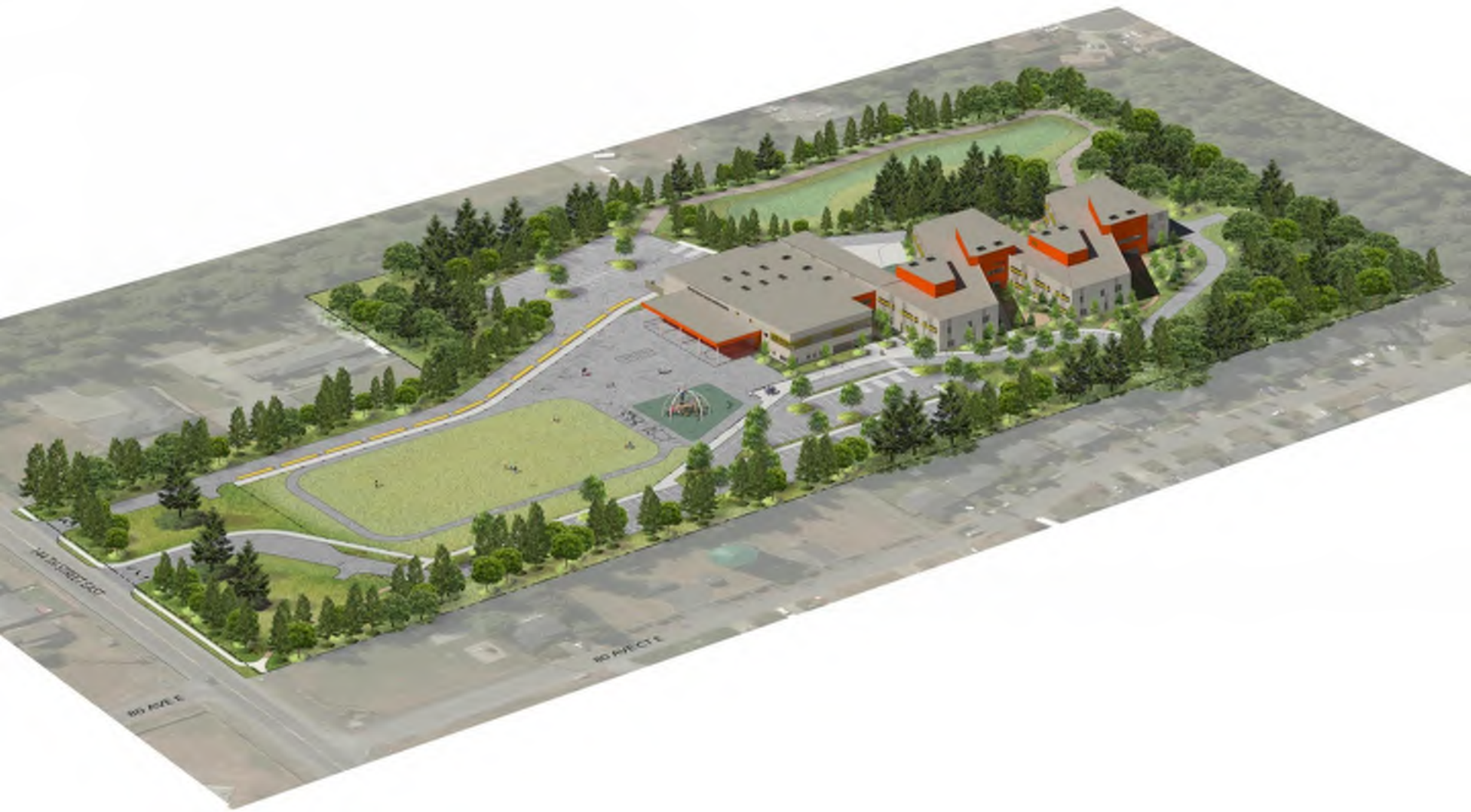


Neighborhood - safe routes to school

Legend

- CLASSROOMS / CLASSROOM SUPPORT
- SPECIAL SERVICES
- MUSIC
- LEARNING RESOURCE CENTER
- PHYSICAL EDUCATION & FOOD SERVICE
- ADMINISTRATION / STUDENT SERVICES
- SUPPORT SPACES
- CIRCULATION





Massing

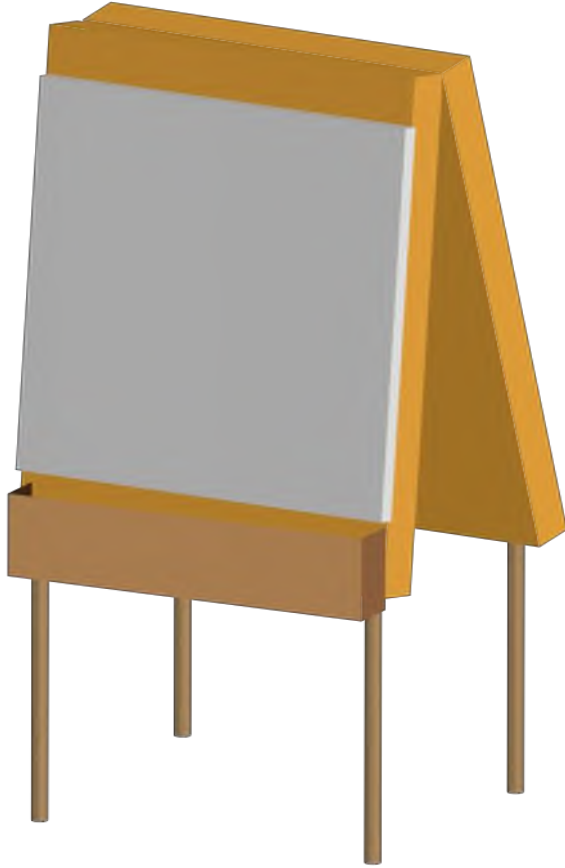


Building Massing



Rendering

walk-about observations



questions





**thank
you**